

**CER1 Antibody (N-term)**  
**Purified Rabbit Polyclonal Antibody (Pab)**  
**Catalog # AP6951a****Specification**

---

**CER1 Antibody (N-term) - Product Information**

Application	IHC-P, WB,E
Primary Accession	<a href="#">O95813</a>
Reactivity	Human
Host	Rabbit
Clonality	Polyclonal
Isotype	Rabbit IgG
Antigen Region	56-85

**CER1 Antibody (N-term) - Additional Information****Gene ID** 9350**Other Names**

Cerberus, Cerberus-related protein, DAN domain family member 4, CER1, DAND4

**Target/Specificity**

This CER1 antibody is generated from rabbits immunized with a KLH conjugated synthetic peptide between 56-85 amino acids from the N-terminal region of human CER1.

**Dilution**

IHC-P~~1:50~100

WB~~1:1000

E~~Use at an assay dependent concentration.

**Format**

Purified polyclonal antibody supplied in PBS with 0.09% (W/V) sodium azide. This antibody is prepared by Saturated Ammonium Sulfate (SAS) precipitation followed by dialysis against PBS.

**Storage**

Maintain refrigerated at 2-8°C for up to 2 weeks. For long term storage store at -20°C in small aliquots to prevent freeze-thaw cycles.

**Precautions**

CER1 Antibody (N-term) is for research use only and not for use in diagnostic or therapeutic procedures.

**CER1 Antibody (N-term) - Protein Information****Name** CER1**Synonyms** DAND4

**Function** Cytokine that may play a role in anterior neural induction and somite formation during embryogenesis in part through a BMP- inhibitory mechanism. Can regulate Nodal signaling during gastrulation as well as the formation and patterning of the primitive streak (By similarity).

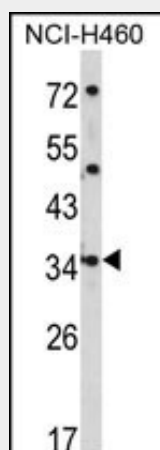
**Cellular Location**  
Secreted.

### CER1 Antibody (N-term) - Protocols

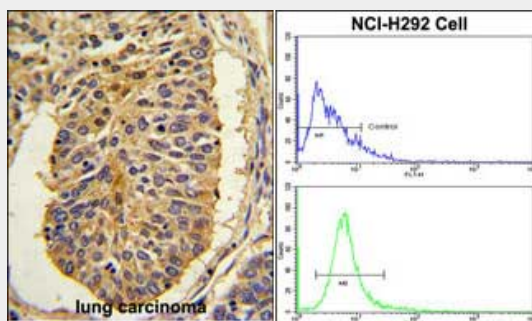
Provided below are standard protocols that you may find useful for product applications.

- [Western Blot](#)
- [Blocking Peptides](#)
- [Dot Blot](#)
- [Immunohistochemistry](#)
- [Immunofluorescence](#)
- [Immunoprecipitation](#)
- [Flow Cytometry](#)
- [Cell Culture](#)

### CER1 Antibody (N-term) - Images



Western blot analysis of CER1 Antibody (N-term) (Cat. #AP6951a) in NCI-H460 cell line lysates (35ug/lane). CER1 (arrow) was detected using the purified Pab.



(LEFT) Formalin-fixed and paraffin-embedded human lung carcinoma with CER1 Antibody (N-term), which was peroxidase-conjugated to the secondary antibody, followed by DAB staining. This data demonstrates the use of this antibody for immunohistochemistry; clinical relevance has not been evaluated. (RIGHT) Flow cytometric analysis of NCI-H292 cells using 0.025mg/ml of CER1

Antibody (N-term) (bottom histogram) compared to a negative control cell (top histogram). FITC-conjugated goat-anti-rabbit secondary antibodies were used for the analysis.

#### **CER1 Antibody (N-term) - Background**

CER1 is a cytokine member of the cysteine knot superfamily, characterized by nine conserved cysteines and a cysteine knot region. The cerberus-related cytokines, together with Dan and DRM/Gremlin, represent a group of bone morphogenetic protein (BMP) antagonists that can bind directly to BMPs and inhibit their activity.

#### **CER1 Antibody (N-term) - References**

Tang,P.L., et.al., J. Bone Miner. Res. 24 (6), 1013-1021 (2009)  
Swinkels,M.E., et.al., Am. J. Med. Genet. A 146A (11), 1430-1438 (2008)